

Figure 10.1. GPS locations for elk A collected 2019-Apr to 2021-Jun. Fort Clatsop unit is shaded a lightly transparent forest green. The collar for elk A is no longer providing data.

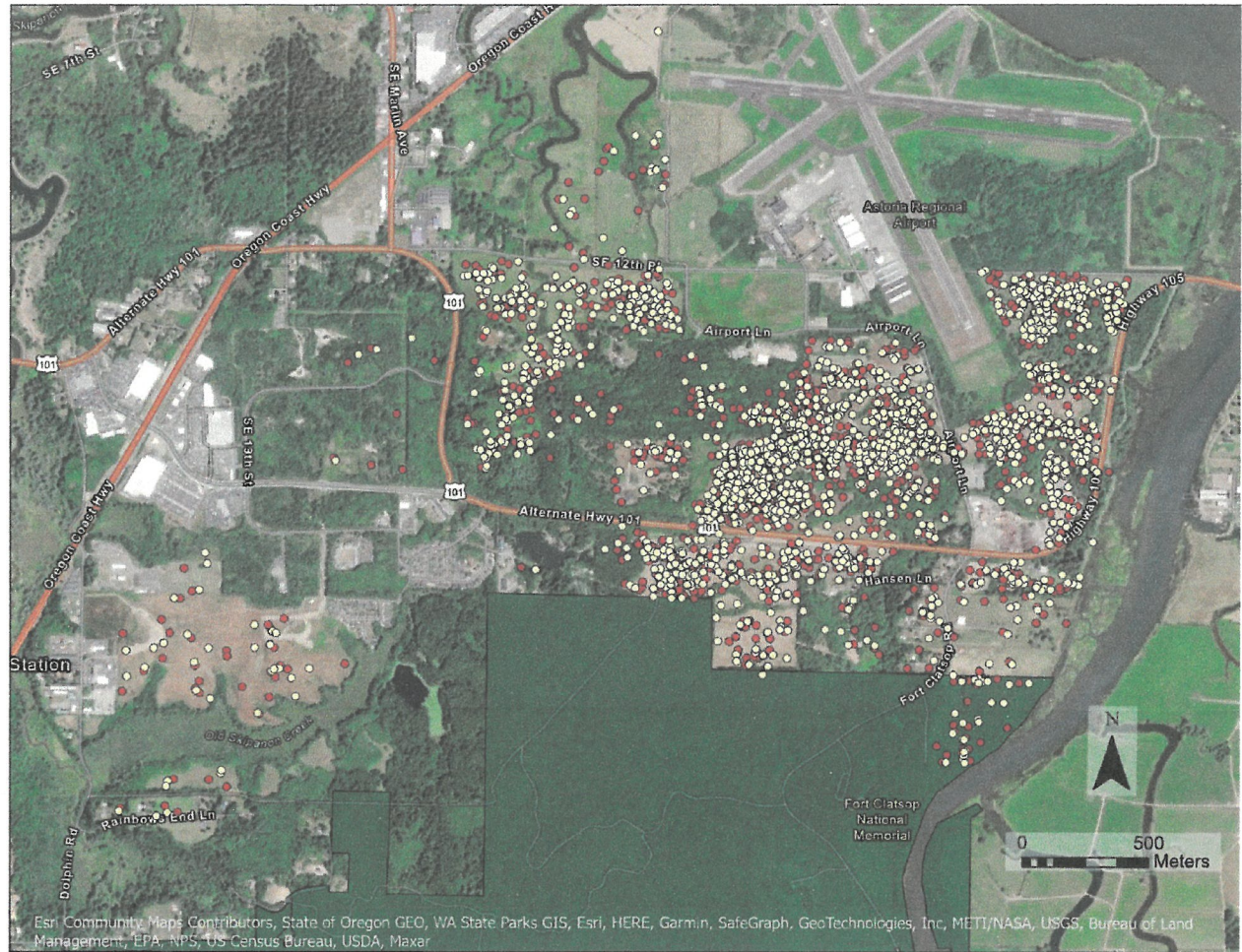


Figure 10.2. GPS locations for elk D collected 2019-Apr through 2021-Oct (yellow) layered over data from elk A (red), with Fort Clatsop shaded in lightly transparent green. Data represent over two years of concurrent fixes. Elk D died during the study period.



Figure 10.4. GPS locations for elk E collected 2019-Apr through 2019-Dec (light blue) layered over data from elk C 2020-Sep through 2022-May (light yellow). The NPS Fort Clatsop unit, and state operated Sunset Beach and Yeon Property are displayed in shades of green. Elk E perished during the study period.

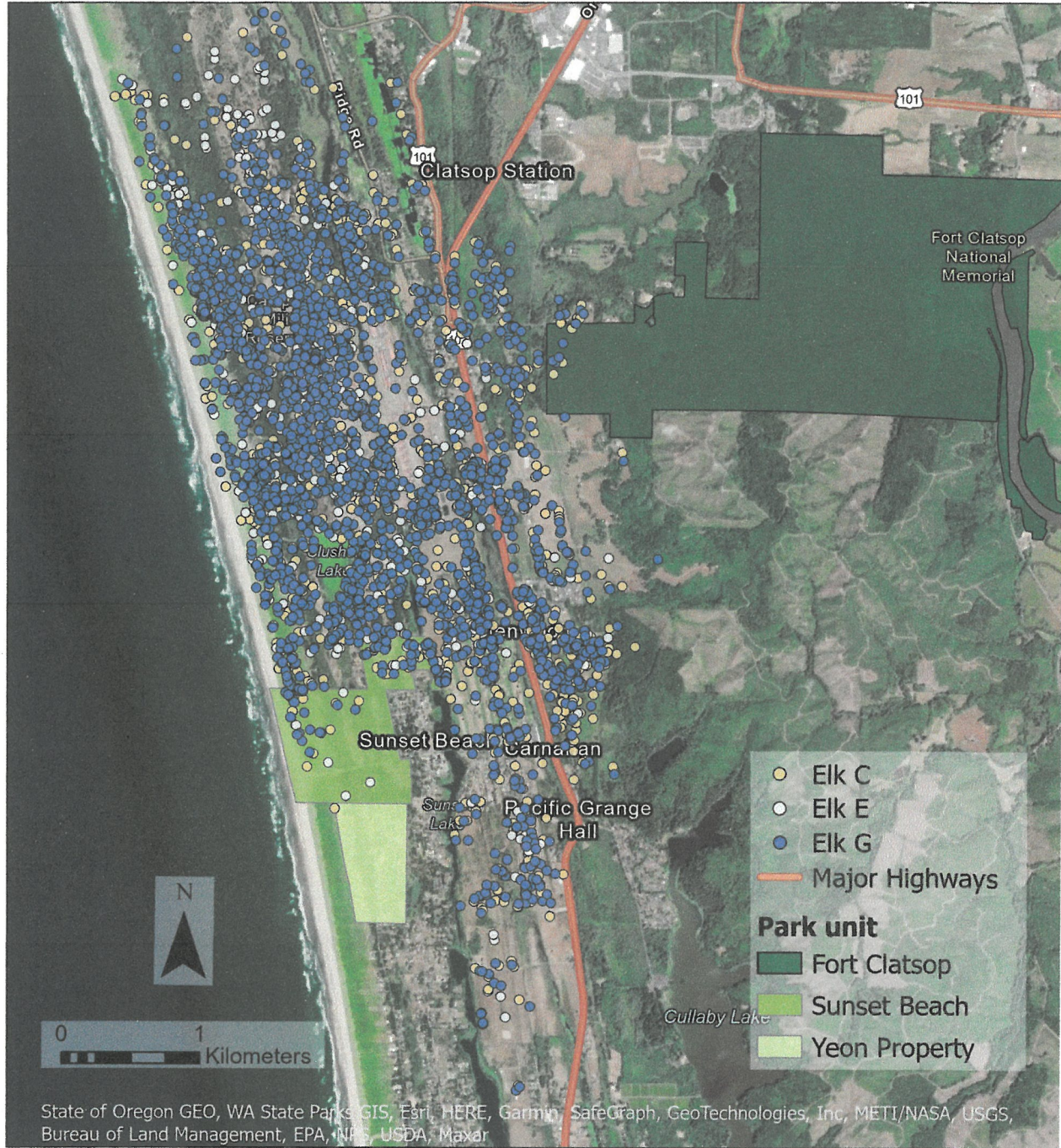


Figure 10.5. GPS locations for elk G collected 2019-Apr through 2022-Apr (dark blue) overlapped concurrently with the active periods for both elk C (light yellow) and elk E (light blue). The NPS Fort Clatsop unit, and state operated Sunset Beach and Yeon Property are displayed in shades of green. The collar for elk G successfully dropped off in May 2022.



Figure 10.6. GPS locations for elk F collected 2021-Aug through 2022-May. NPS's Fort Clatsop unit, and state operated Sunset Beach and Yeon Property are displayed in shades of green. The collar for elk F remains active as of May 2022.



Figure 10.7. GPS locations for elk B collected 2021-Aug through 2022-May. State operated Sunset Beach and Yeon Property are displayed in shades of green. The collar for elk B remains active as of May 2022.