

NCLC's Vision and Partnership in Protecting the Neacoxie

Mark McLaughlin,
Conservation Director

markm@nclctrust.org

*Gearhart City Council
December 3, 2025*



[Photo credit: NCLC]

Agenda

► North Coast Land Conservancy's Story

- Who we are
- What we do
- Where we work

► Neacoxie Corridor Initiative

- Conservation via preservation
- NCLC's role as facilitator

► Facilitation Framework

- Provide due diligence needs
- Land donation / acquisition expertise



[Photo credit: NCLC]

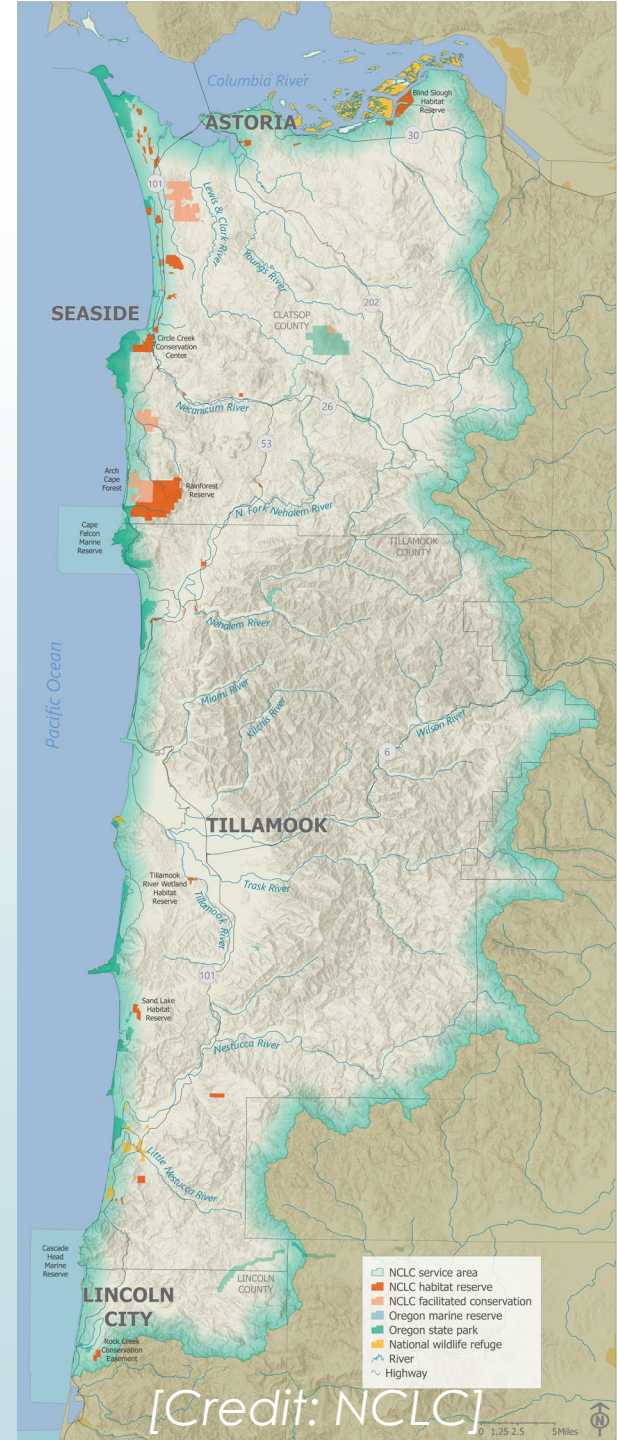
NCLC Introduction

► Our Story:

- Founded in 1986
- ~15,000 acres protected → acquired, conservation easements, & facilitated
- Nearly 70 designated Habitat Reserves
- Only land trust with a marine program → *Cape Falcon Marine Reserve*
- One of ~450 nationally accredited land trusts
- 15 full-time employees; a handful of seasonal staff

► Service Area:

- NCLC's service area covers more than 2,600 square miles from the Columbia River south to Siletz Bay, from the peaks of the Coast Range to the nearshore ocean.



NCLC's Mission and Vision

- **Mission**: Helping to conserve Oregon's coastal lands and waters, forever.
- **Vision**: An Oregon Coast where people, plants, fish and wildlife all thrive.
- **Our Core Values**:
 - Seeking Common Ground
 - Integrity
 - Connectivity
 - Joy



*Cape Falcon Marine Reserve, Oswald West State Park, and NCLC Rainforest Reserve (in the background).
[Photo credit: NCLC].*

NCLC's Conservation

- **Strategy**: Creating a system that facilitates the connectivity to support wildlife and ecological processes.
- Is centered around three main elements that serve as focal points of our coastal conservation work:

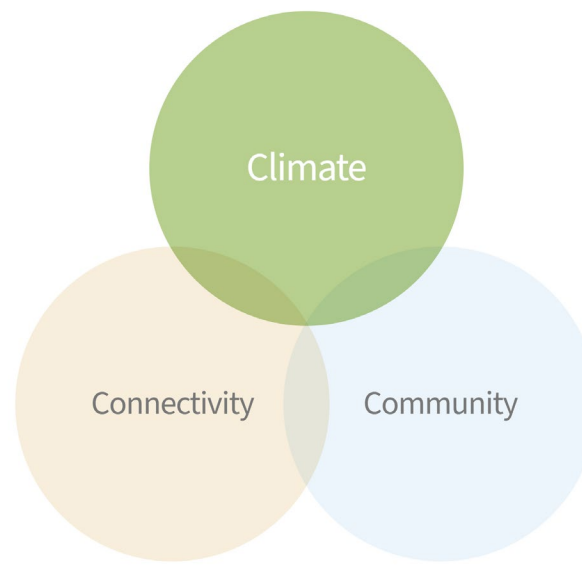
- **Habitat Connectivity**,
- **Climate Resiliency**, and
- **Community Conservation**.

- **NCLC's Land Conservation Plan – A 20-year Vision**

- <https://nclctrust.org/our-work/conservation/2024-conservation-plan/>



We value the interconnectivity of all life.



[Credit: NCLC]

NCLC's Conservation Initiatives

2024 Conservation Plan

- Estuaries and Tidal Wetlands
- Coastal Edge
- *Necanicum Watershed*
- Nehalem Watershed
- Community Conservation
- Marine Program



Coastal Estuaries



Coastal Edge



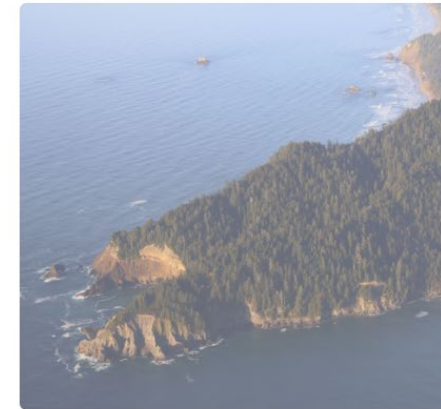
Columbia Quiet Waters



Neacoxie Wildlife Corridor



Necanicum Wildlife Corridor



More Conserved Lands



<https://nclctrust.org/our-work/conservation/>

NCLC's Stewardship

► Ecosystem Protection Framework:

- Stewardship planning
- Protection
- Passive ecological restoration
- Active habitat enhancement
- Annual site visits and monitoring reports

► Stewardship Volunteers

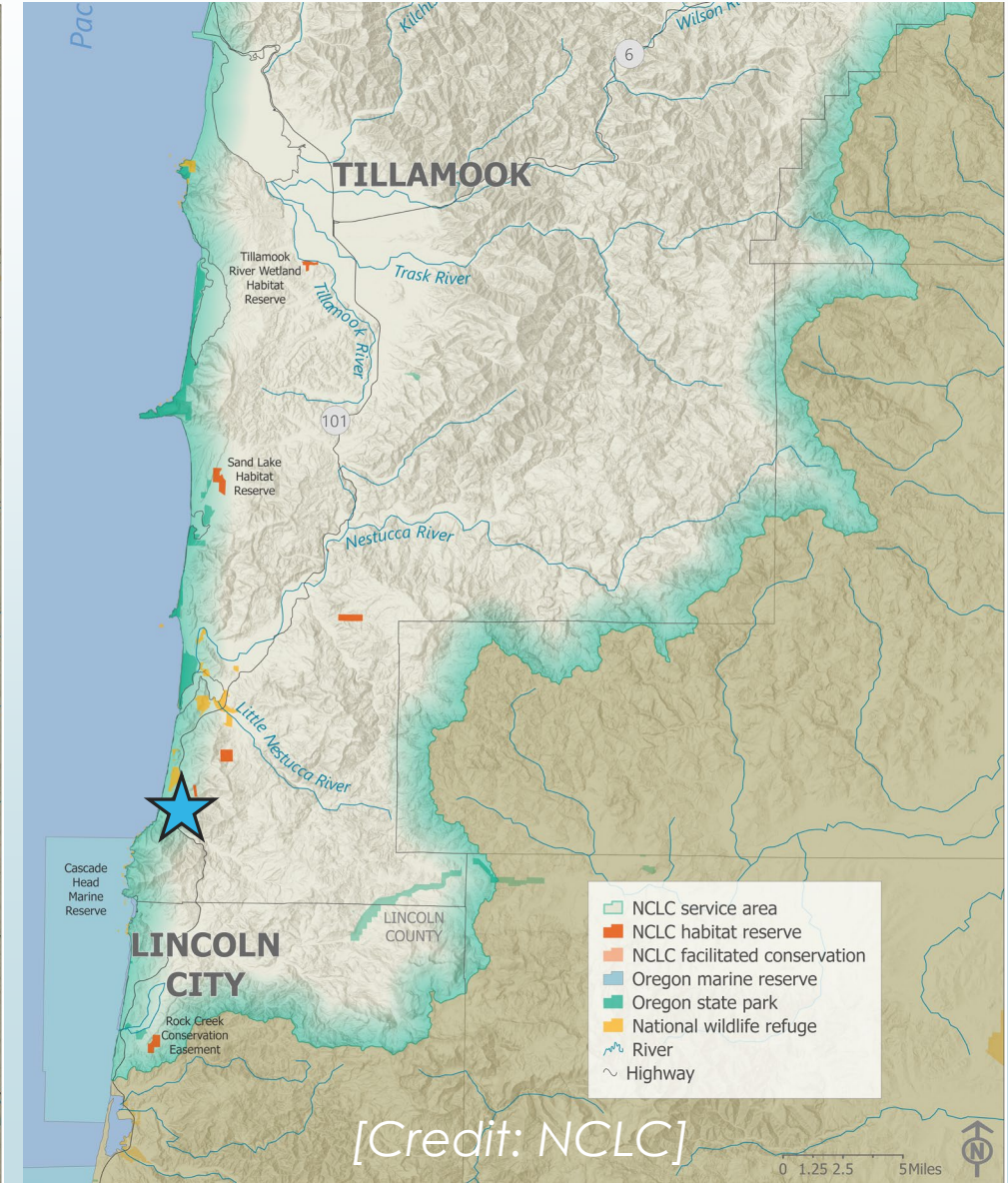
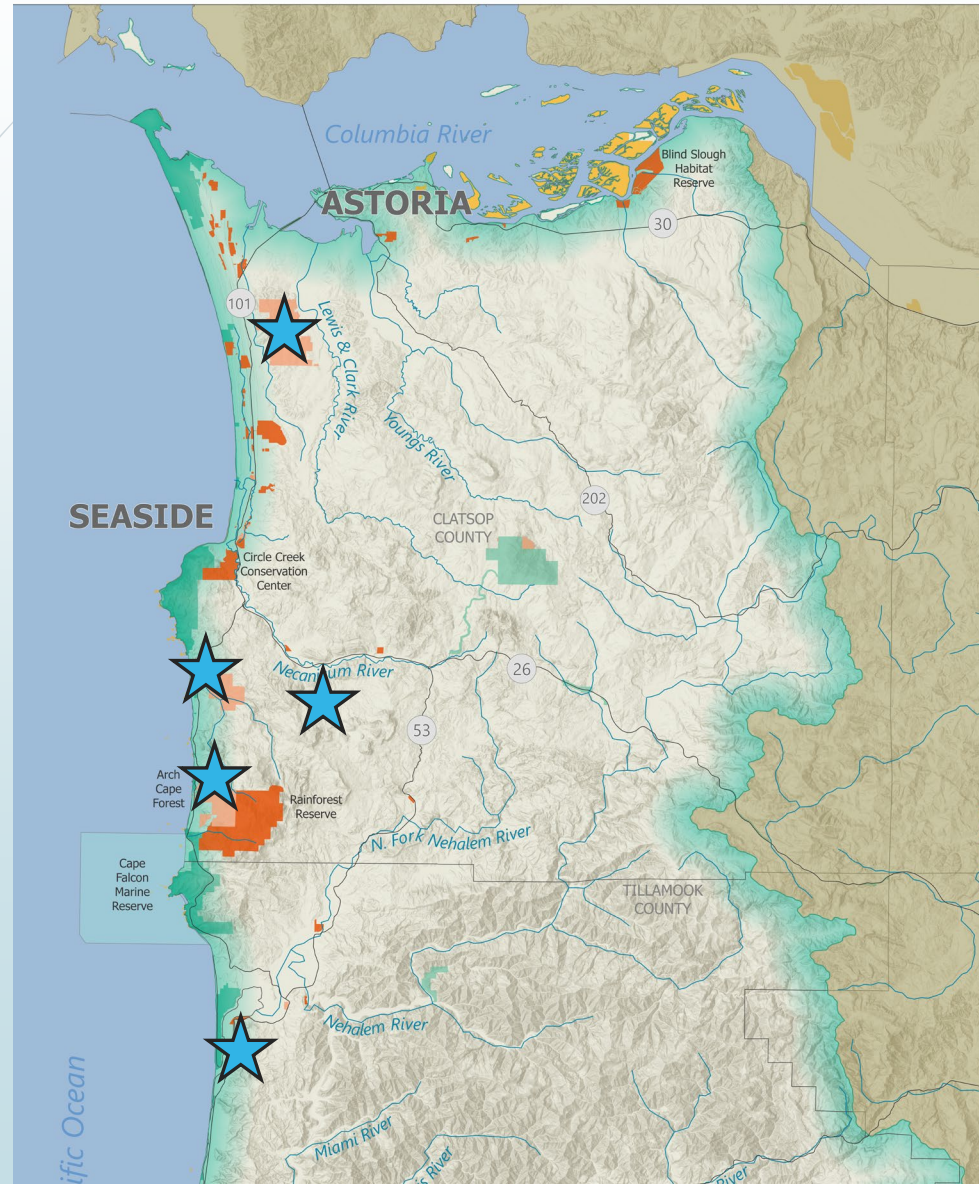
- **Site Stewards** – our eyes and ears on the ground.
- **Work Parties** – planting, mulching, building.
- **Programs: Weed Warrior Wednesdays** – remove TONS of weeds annually!



[Photo credit: NCLC]

Facilitation Projects

➤ *Benefiting coastal communities*



Facilitating the Protection of Ecosystems

► NCLC's Role as Facilitator

- Assisting community acquisition / donation of lands
- Grant writing support
- Technical expertise
- Due diligence review
- Planning and prioritization



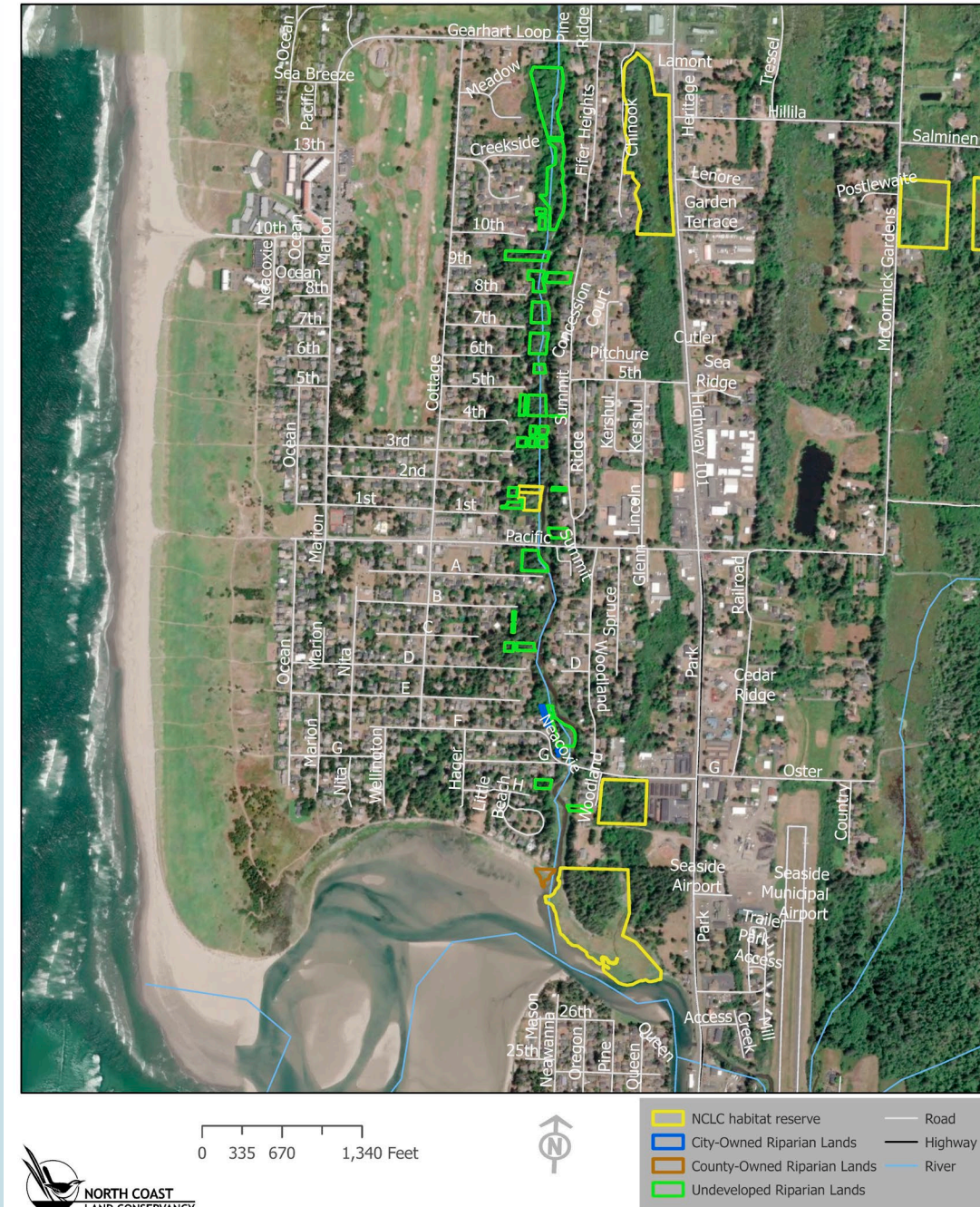
Arch Cape Community Forest and NCLC's Rainforest Reserve. [Photo credit: Ben Hayes]

Neacoxie Creek Corridor

► Protecting Riparian Lands

- Identifying undeveloped lands adjacent to Neacoxie Creek (*Necanicum Watershed Conservation Initiative*)
- Prioritization vs. opportunity
- Collaboration among NCLC and the City of Gearhart to:
 - Develop a partnership framework
 - Clarify the Scop of Work
 - How to best position the City to protect available lands
 - Identify potential public uses → open space / protected lands / access
 - Allow for property-specific outcomes

Neacoxie Riparian Corridor Properties



Framework in Protecting the Neacoxie

► Example Project Workflow

- Potential donation¹ property identified for protection
- Site visit / environmental assessment
- Due diligence / title review / project soundness
- *Appraisal (*acquired by landowners who are seeking tax-deductible donation*)
- Donation agreement → including potential deed restrictions
- Closing / transfer of property to City ownership



¹ NCLC isn't expecting to fundraise or write grants for acquisition funds as part of this partnership

*** NCLC advises landowners to seek independent legal and accounting advice.**

A Next Step in Protecting the Neacoxie

► Transfer of 2nd St Property to City

- After a framework and scope of work is established between NCLC and the City →
- Donation of 2nd St Property to City as an next step and proof of concept
- 2nd St Project was unique for NCLC, and is seen an important piece for the City as conservation partners with preserving Neacoxie Creek



[Photo credit: NCLC]

Final Thoughts

► NCLC as a collaborator

- Partner → part of the solution
- Positioning City to protect the Creek

► To Consider:

- Understanding of City process to establish a partnership with NCLC
- Community needs
- Long-term stewardship
- Outreach / educating landowners
- City capacity
- Point of contact for the City



[Photo credit: NCLC]

Questions

Mark McLaughlin,
Conservation Director, NCLC
markm@nclctrust.org



[Credit: NCLC]